

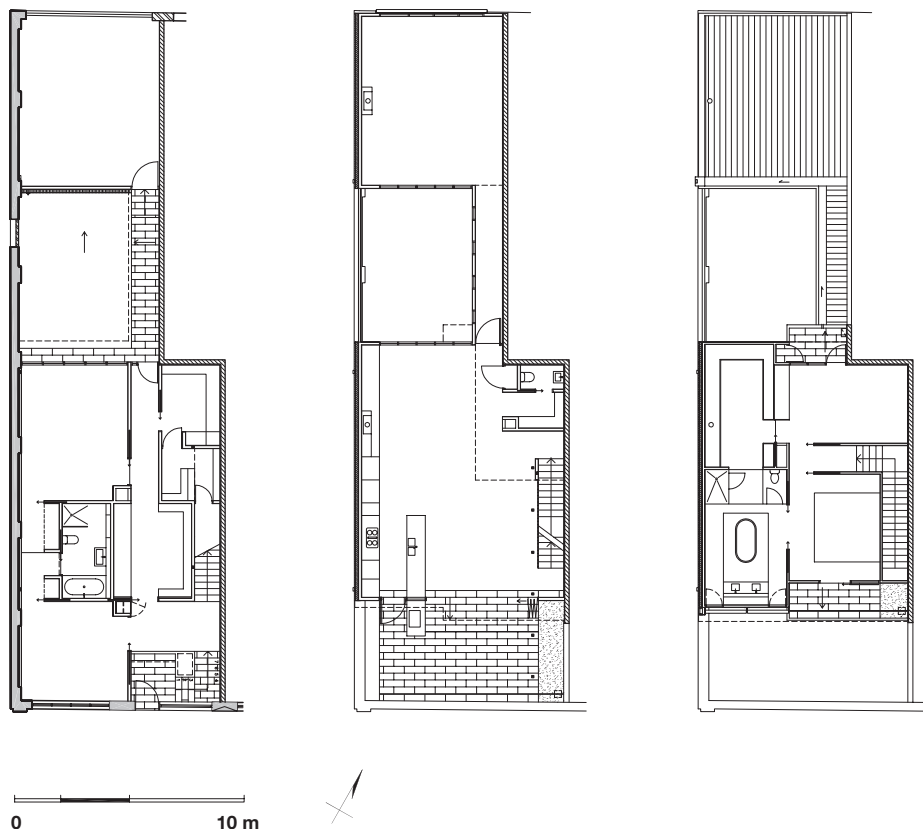
# HOUSE LIGHTS

Jessup and King's luminous scheme for domestic theatre keeps the life of a growing young family at centre stage.



Story by Peter Davies Photography by Dianna Snape





**WITHIN A SOARING VOLUME**, this kitchen delivers finely choreographed performance – a nuanced play of dramatic flair and functional planning that forms a backdrop to the daily goings-on of the household.

It is pared back but painstakingly resolved. A wall of full-height joinery anchors the space, the clean lines of the cabinetry creating planes of white that don't immediately shout "kitchen." This obscuring of thresholds was a deliberate strategy – a way to clearly integrate the kitchen as part of the shared living-dining-cooking zone – that is continued in the kitchen's detailing.

"It is very much a central core among dining, living and then outdoor living. We were interested in the sense of volume that was present in the original warehouse space," Allison Jessup of architect Jessup and King explains. "We didn't want the kitchen to be enclosed and tucked away in a corner; we wanted it to feel big and generous and well proportioned," John King adds.

The kitchen's island bench runs through the space, puncturing an exterior glass wall and terminating in a cantilevered custom barbecue. It is a bold gesture, and further evidence of this integration of living and cooking.

An artful lighting scheme adapts the space, shifting it from brightly lit culinary hub to moody dining area. When in use, the kitchen is lit by a cylindrical pendant above the bench and concealed lights over the cook surface; when dinner is served, the kitchen recedes, with low-level lights throwing pools of soft illumination across the floor.

"When you have such a big space where everything is open to adjacent areas, it can feel a bit vacuous," Allison explains. "So we used lighting to create virtual spaces or in-between zones. The red pendant over the dining table keys in with the red pendant over the bench and isolates these lower pools of light," Allison says.

Theatrical lighting carries through to the bathroom – a generous haven alongside the master bedroom. Self-contained cubicles, housing the shower on one side and the toilet on the other, are lit from within, transforming them into block-like columns of green glass. Beyond a freestanding tub and angled mirror, the double vanity is illuminated by two delicate pendants. As in the kitchen, planes of material become a backdrop to inserted elements. A stone mat slides under the freestanding tub before continuing up the wall, and a sweep of timber floor surrounds it, connecting to the bedroom beyond. **K+B**

**ARCHITECT**  
**Jessup and King**  
**Level 8, 180 Russell Street**  
**Melbourne Victoria 3000**  
**Tel: +613 9654 0033**  
**Fax: +613 9654 1133**  
**Email:**  
**allison@jessupandking.com.au**  
**john@jessupandking.com.au**  
**Web: jessupandking.com.au**

**PRACTICE PROFILE**  
 The two-person practice, with a part-time student, has worked on bespoke commercial, theatre design and multiresidential development, but predominantly single houses.

**PROJECT TEAM**  
 John King (architect),  
 Allison Jessup (interior)

**BUILDER**  
 T. M. Waverley Builders

**JOINER**  
 Designcraft

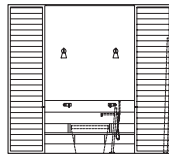
**CONSULTANTS**  
**Engineer** John Gardner & Associates  
**Interiors** Jessup and King  
**Lighting** Jessup and King

**TIME SCHEDULE**  
**Design, documentation** 9 months  
**Construction** 12 months

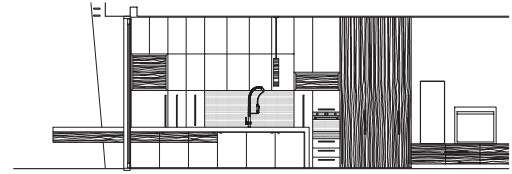
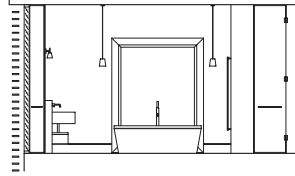
**PROJECT COST**  
**Total project**  
 \$1 million  
**Kitchen**  
 \$50,000  
**Bathrooms**  
 \$40,000



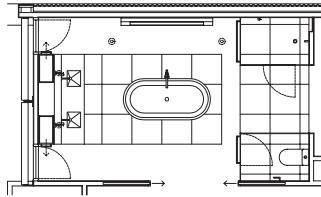
PREVIOUS PAGES: The kitchen island bench passes through the exterior glass wall; a service window opens it to outdoor cooking activities.  
THIS PAGE: A vibrant red pendant throws a spotlight on food preparation; concealed kickboard lights spread soft beams over the wooden floor during meals.



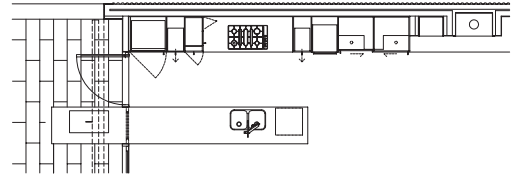
Master ensuite elevations



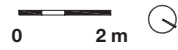
Kitchen elevation



Master ensuite plan



Kitchen plan



**THIS PAGE:** The shower and toilet, housed in columns of green glass, flank the freestanding tub, which perches atop a “mat” of pale stone. **OPPOSITE PAGE:** An elegant pendant fixture descends from the ceiling to create a quiet focal point for the master bathroom, providing gentle illumination for the contrasting elements of wood, stone and glass. The custom mirror is tilted slightly upwards to emphasize the generosity of space rather than the bather’s own reflection.





#### PRODUCTS KITCHEN

**Internal walls** Plasterboard painted Dulux 'Berkshire White'; feature red wall ascending all levels with render finish on fc sheet **Flooring** Urban Salvage recycled spotted gum **Joinery** Quantum Quartz 'Diamond White' composite stone island bench; Laminex 'White' flint finish laminate; crown-cut American walnut; Smeg counter hob; bluestone hearth; Colourbacked glass splashback to match Dulux Bronze; Industrial Expression door pulls **Lighting** Inlite; Euroluce pin spot downlights **Sinks and tapware** Abey Daintree QD2U undermount double-bowl sink and Oxygene Hi-Tech mixer **Appliances** Smeg SA398X/1 oven, SAR93AXSI+GR9 cooktop and SA31MX microwave; Miele G896SCi dishwasher; Fisher & Paykel E442BLT integrated fridge and freezer; Qasair UCH80-T rangehood **Doors and windows** Natural anodized aluminium

#### PRODUCTS BATHROOM

**Internal walls** Dulux Nile Clay P13 B5 low sheen acrylic paint; Classic Ceramics Mink and Avalanche 48 x 48 glazed mosaic tiles on master ensuite walls; Bisazza Mosaico 20 x 20 glass mosaic tiles on powder room splashback **Flooring** Urban Salvage recycled spotted gum; Quarella 'Calacatta' composite quartz stone tiles in ensuite; Classic Ceramics Lounge White West and Lounge Brown Plain 330 x 330 custom-cut wall tiles in bathroom **Joinery** Quarella 'Calacatta' composite quartz vanity countertop in ensuite; Bisazza Mosaico 20 x 20 glass mosaic tiles on vanity bench in powder room; custom-made large wooden wall mirror by Designcraft Cabinets **Lighting** Euroluce Flos Miss K pendants and Flos Romeo Babe wall lights **Tapware and fittings** Accent International Intamix Geo Viva SMX1 basin tapware and shower mixer; Reece Scope #2 Square basin mixer in bathroom and Scope #5 basin mixer in powder room; DCS 1200 x 600 heated towel ladder **Sanitaryware** Kaldewei Centroform 118 freestanding bath with shroud; Duravit Starck 3 wc; Caroma Liano 430 undermount basin in ensuite; Duravit Vero 800-mm basin in bathroom; Cynosure Luna semi-recessed basin in powder room